

MOOD



HAKO

"HAKO" Prefabricated House



HAKO by MOOD LIVING

Introducing HAKO, a new approach to prefabricated housing from MOOD Living. With HAKO, you have the freedom to personalize your living space, allowing you to select and arrange features to suit your lifestyle. Our "modular design" philosophy ensures that each HAKO home is tailored to meet your needs, combining the expertise of Thai and Japanese architects to create a space that prioritizes functionality and comfort.



HAKO Modular Design Concept



HAKO Key Features

Minimalist Design

Drawing inspiration from Japanese design principles, HAKO homes feature clean lines and minimalist aesthetics, both inside and out.

Premium Materials

Crafted from durable wood substitute material, chosen for its ability to withstand Thailand's climate while maintaining its visual appeal.

Energy Efficiency

Designed with insulated roofs and hybrid wall systems, HAKO homes offer improved energy efficiency, ensuring comfortable living conditions year-round.

Structural Warranty

Built on TIS-standards steel, HAKO homes come with a structural warranty of 10 years*.

Time Efficiency

With a production lead time of under 60 days and installation typically completed within 1-7 days*, HAKO homes are delivered in a timely manner.

Budget-Friendly

Tailor your HAKO home to fit your budget by selecting the size, layout, and features that matter most to you.

Quality Assurance

Each HAKO home undergoes rigorous quality control checks throughout the production process to ensure the highest standards are maintained.

Fully Furnished

HAKO homes come fully furnished, complete with carefully selected furniture and built-in decorations, ready for immediate occupancy.

Universal Design

Our modular design includes options suitable for the elderly and wheelchair users, ensuring inclusivity in every home.

Flexible Relocation

Adapt to changing needs with HAKO's ability to be relocated to a new site as required*.

*subject to specified conditions.

HAKO 5.5

A single-story model with a length of 5.5 meters and a usable area of 21 square meters. Featuring a Japanese-style tatami room, it offers versatility as a living space, office, or bedroom, complete with an ensuite bathroom and a balcony.





HAKO 8.3 +

A two-story model measuring 8.3 meters in length, offering a spacious usable area of 44 square meters. Ideal for up to 4 individuals, it includes a multi-purpose room with a bunk bed, a Japanese-style bathroom with a bathtub, a kitchenette, a balcony, and a king-size bed on the second floor, perfect for vacation homes or family garden houses.



HAKO Specification

- House width: 3.15 meters
- Height from floor to rooftop: 3.35 meters (5.03 meters for 2-story model)
- Steel structure, TIS standard
- H-beam steel pier dimensions: 10x10 cm
- Steel channels main beams, 15 cm in depth
- Metalsheet roof, seam lock type, with 3-inch EPS insulation
- Smartboard floor: 20 mm thick + absorbent rubber
- Heat-resistant wall, HYBRID type (smartboard 10 mm. + air gap + iso wall insulation EPS 2 inches + gypsum board 8 mm.)
- Balcony flooring and exterior walls: imported synthetic wood
- Main entrance door: aluminum with wood pattern, Euro profile
- Wooden pattern aluminum window, height: 2.1 meters
- Wooden bathroom door: corrugated surface, PS material, 100% waterproof and termite resistant
- Exterior columns and beams wrapped with wood-pattern metalsheet
- Synthetic wood interior floor imported from Japan
- Migusa tatami mats imported from Japan (optional)
- Furniture and built-in kitchen with wood pattern laminate paneling
- Kitchen top and bathtub top: 100% grade acrylic
- Gypsum board ceiling or imported synthetic wood ceiling (optional)
- Cotto sanitary ware or equivalent
- Faucets and water valves: Cotto, Mogen, Hafele, or equivalent
- Sink and kitchen faucet: Hafele or equivalent
- Fitting: Hafele equipment or equivalent
- Electrical appliances: MEX hot/warm water heater or equivalent
- Carrier air conditioner or equivalent
- LED lamps and bulbs throughout the house
- Electrical switches/plugs, special design Art DNA

Note: The listed price does not include:

- Pile work, foundations, earthen beams for building support
- Treatment tank work, septic tanks, seepage ponds
- Curtain and mosquito screen
- Mattresses, cushions, bedding, or decorative items
- Transportation and crane costs
- Administrative fees (applicable only in cases where on-site construction is necessary)
- VAT at 7%

Product Warranty:

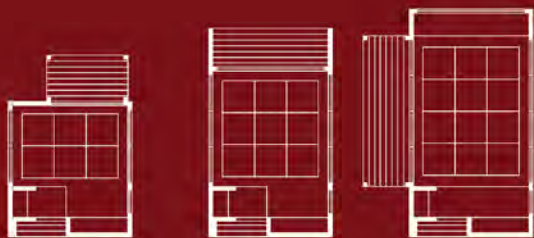
- 10-year warranty on steel columns and beams
- 5-year warranty on floors, walls, and roof structure
- 2-year warranty on general architectural work and exterior leakage
- 1-year warranty on electrical equipment and systems
- Surface materials and furniture are not covered by the warranty after installation
- Warranty conditions apply under normal building use

MOOD



HAKO COMBINATION EXAMPLES

MOOD



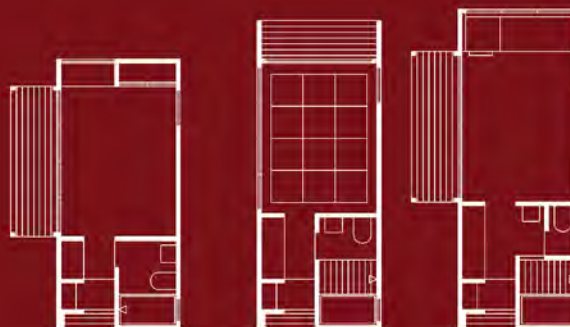
Relaxation room, exercise or yoga studio, prayer room, tea room



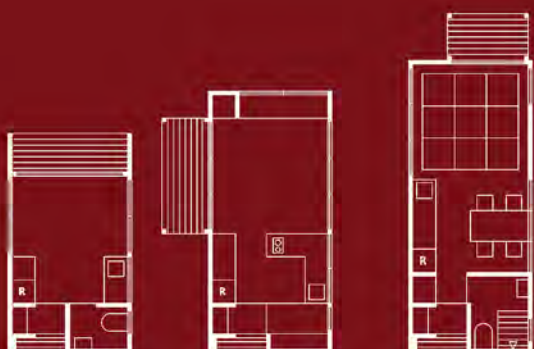
Compact office, studio workshop with bathroom



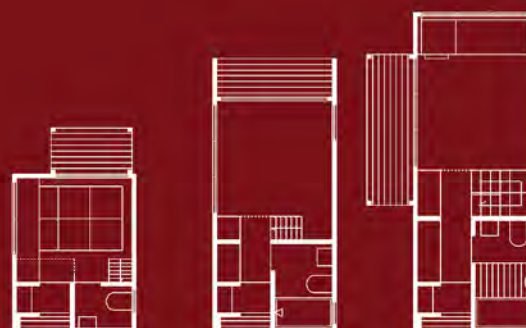
Multipurpose room, standard size room



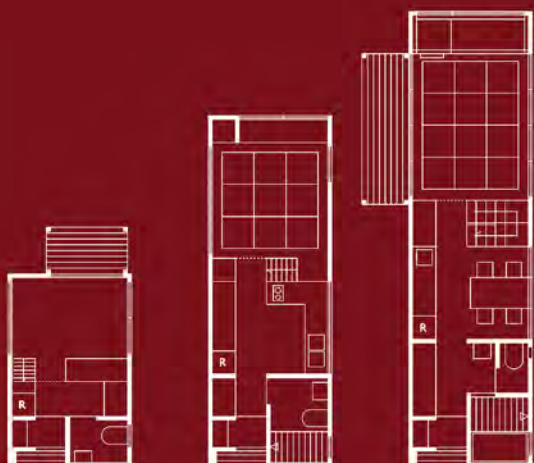
Multipurpose room, large size room



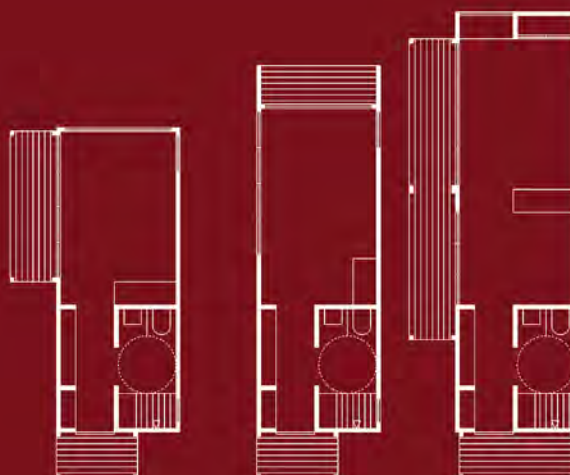
Multipurpose room with kitchen



Multipurpose room, two-story



Multipurpose room, two-story with kitchen



Rooms for elderly and wheelchair users

MOOD

Mood Living 168 Company Limited

Head Office:

236 Soi Sirindhorn 7, Bang Bamru Subdistrict,
Bang Phlat District, Bangkok 10700

HAKO Prefabricated House Show Unit:

Number 12/1 Village No. 9, Bang Mae Nang Subdistrict,
Bang Yai District, Nonthaburi 11140

Contact Information:

Tel: 081-450-1525

Email: info@MoodLiving.co.th

Website: MoodLiving.co.th

YouTube / Line Official: @MoodLiving

Facebook / Instagram / X / TikTok: @MoodLivingTH

